

DRAFT

NOT FOR DISTRIBUTION

UConn Library Status Report

Martha Bedard
Vice Provost

Holly Phillips
Assistant Vice Provost

Provost's Library Advisory Committee
November 17, 2016

What is an Academic Research Library Today?

DRAFT

NOT FOR DISTRIBUTION

Our Vision

The Knowledge and Inspiration Hub



What is an Academic Research Library Today?

DRAFT

NOT FOR DISTRIBUTION

Fundamentally our purpose has not changed

Support & Collaboration in key areas

- Research
- Teaching & Learning
- Innovation
- Commercialization
- Patient Care

Constituents

- Faculty
- Students
- Government Agencies
- Corporations
- Community
- Donors

What is an Academic Research Library Today?

DRAFT

Requires balance between providing customary services and meeting the demands of the new ways we learn, teach and conduct research. Our challenges include:

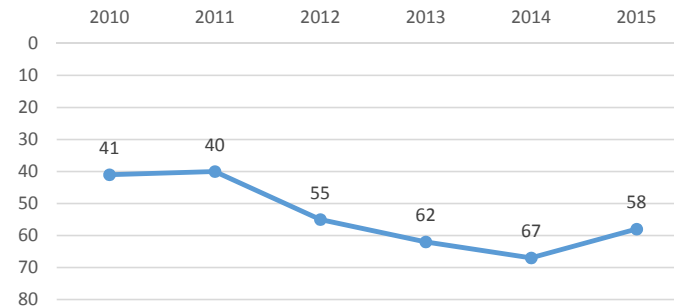
- Expanded expectations
- Need to make decisions based on evidence
- Manage within an increasingly complex environment
- Constantly transform ourselves
- Incorporating new technologies to increase effectiveness and efficiency
- Staying aligned with the University's priorities – the Academic Plan
- Providing carefully selected collections that support instruction and research needs in many formats as well as unique collections and services of distinction

Requires significant percent of library staff to be high-level knowledge workers

ARL Investment Ranking with Peers and Similar ARL Libraries

DRAFT

UConn ARL Investment Ranking 2010-2015



Investment Ranking Based on:

- Total Library Expenditures
- Salaries & Wages Professional Staff
- Total Library Materials Expenditures
- Professional plus Support Staff

Comparisons

- UConn Office of Institutional Research & Effectiveness Peers
- UConn Office of Institutional Research & Effectiveness Aspirants
- Similar ARL Libraries by
 - Student enrollment
 - Presence of Health and Law campuses

OIRE Peer	2015 Rank	OIRE Aspirants	2015 Rank	ARL Similar	2015 Rank
Indiana	26	Penn State	10	Pittsburgh	33
Michigan State	32	Texas	12	Texas Tech	42
Purdue	44	Illinois, Urbana	14	Tennessee	45
Georgia	53	Ohio State	15	Connecticut	58
Utah	57	Wisconsin	24	Kansas	69
Connecticut	58	Florida	38	Florida State	91
Kansas	69	Maryland	40		
Kentucky	77	Connecticut	58		
Delaware	81	California, Davis	86		

DRAFT

NOT FOR DISTRIBUTION

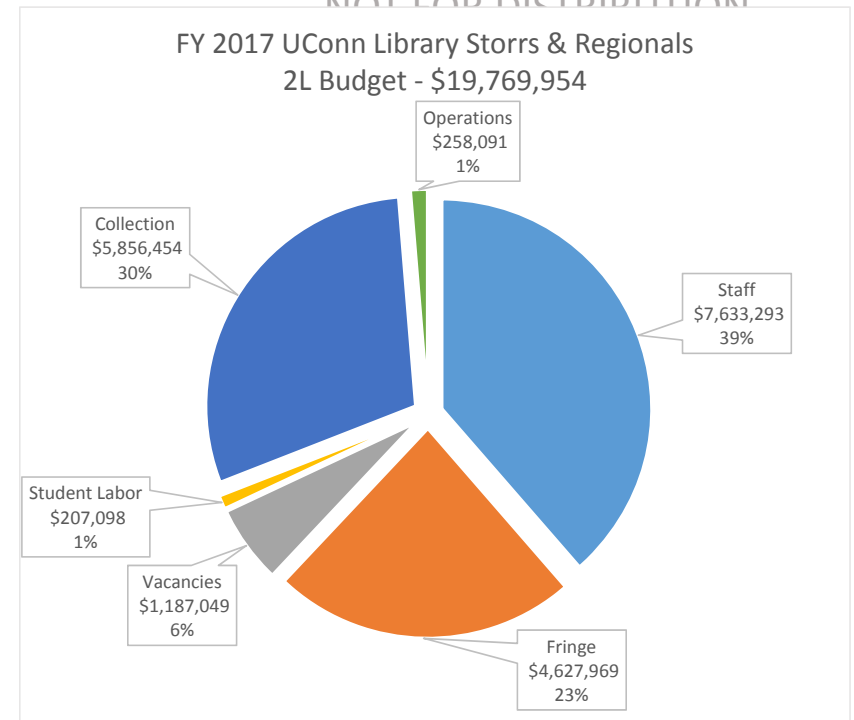
UConn Library Budget

- Total of \$2,908,756 cuts to permanent budget* since FY 2015
- Budget
 - 30% Collections
 - 39% Staff
 - 23% Fringe Benefits
 - 6% Staff and Fringe vacancies to be filled
 - 1% Student Labor
 - 1% Operations

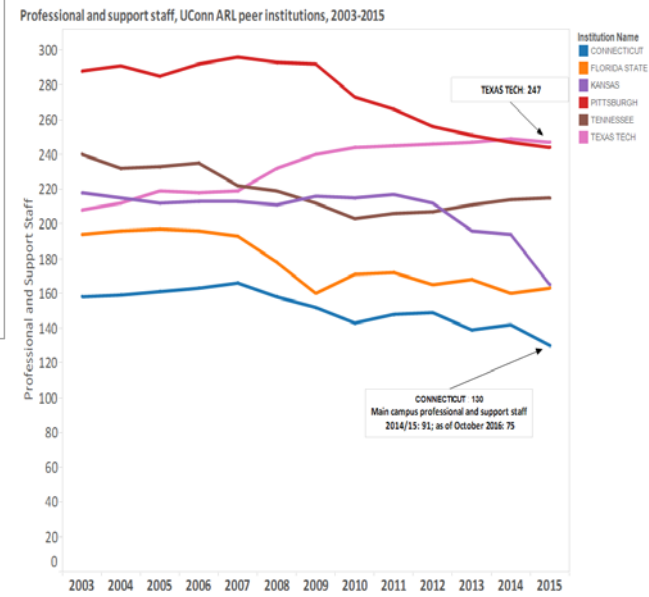
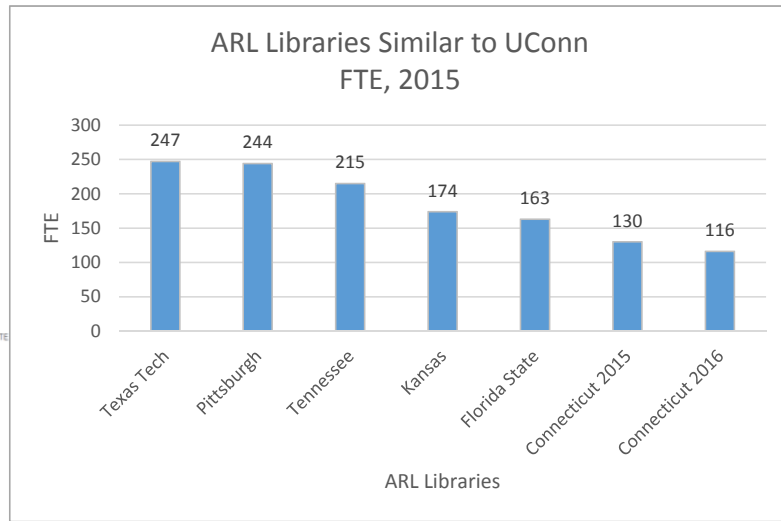
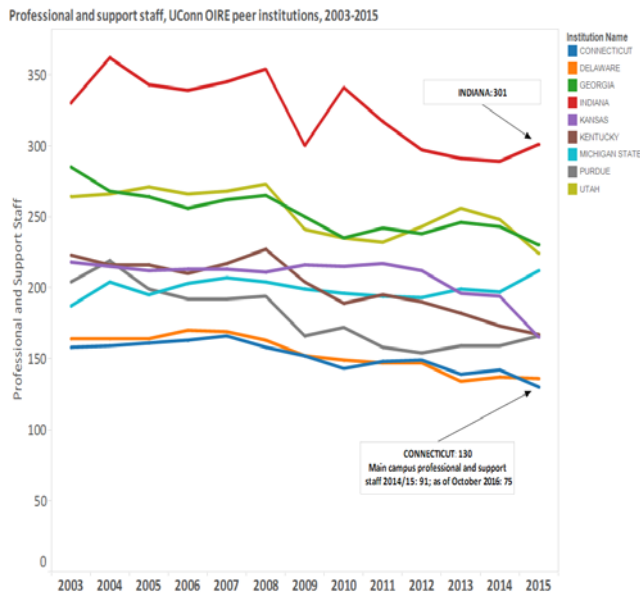
Permanent Cuts to Base FY2015-FY2017

	FY 2015	FY 2016	FY 2017	*FY2018 Rescission Planning	Total
Budget Cut	\$200,000	\$1,222,000	\$611,000	\$574,756	\$2,607,756
Vacancy Tax			\$301,000		\$301,000
Total	\$200,000	\$1,222,000	\$912,000	\$574,756	\$2,908,756

* If FY2018 rescission takes effect



UConn Library Staffing



DRAFT

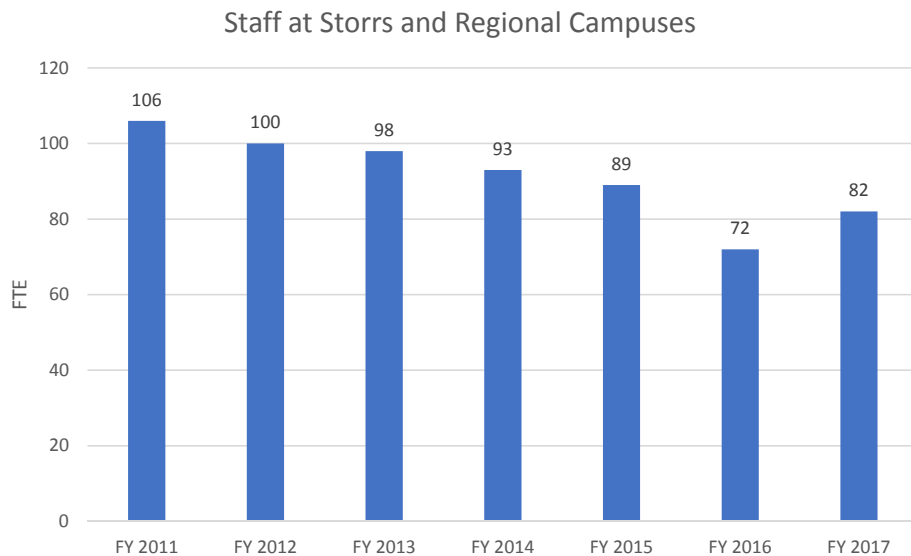
NOT FOR DISTRIBUTION

DRAFT

NOT FOR DISTRIBUTION

UConn Library Staffing

Staff levels impact ability to provide services and resources in a timely manner



*Assuming 10 new hires in FY2017. One hired as of 11/16/16.

Example:

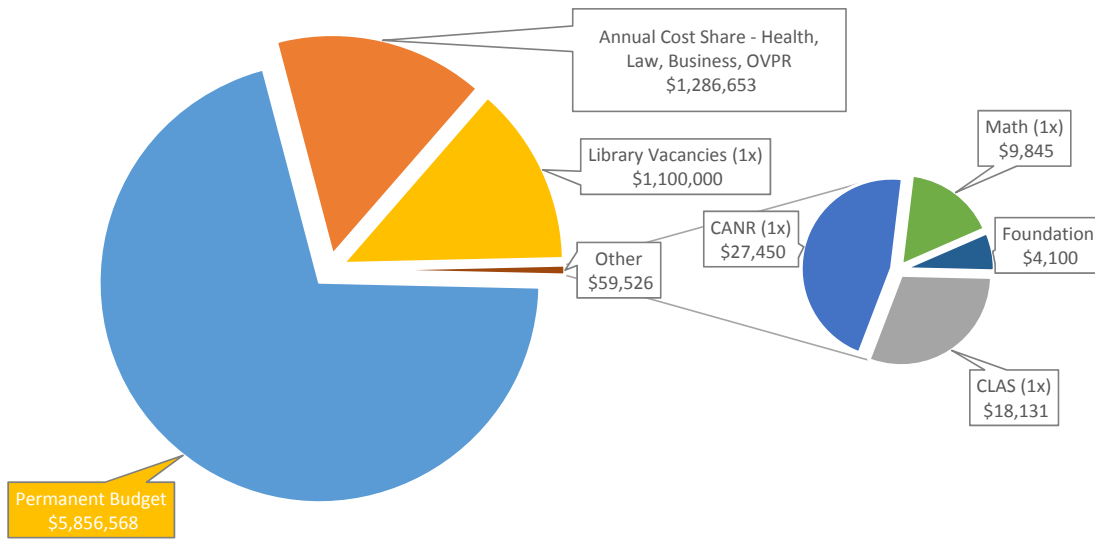
- 12 FTE Subject Specialist Librarians (down 52% from 2011)
 - 2,519:1 student to librarian ratio (Storrs & Regionals)
 - 168:1 faculty to librarian ratio (Storrs & Regionals)
- Reduced ability to assist faculty and students with
 - Consultations and research assistance transactions down 28% from last year
 - Instruction group presentations down 24% from last year
 - Collection review affected by large gaps in expertise and delay in collection acquisition
 - Grant support for data management plans, systematic reviews, etc.

UConn Library Collections

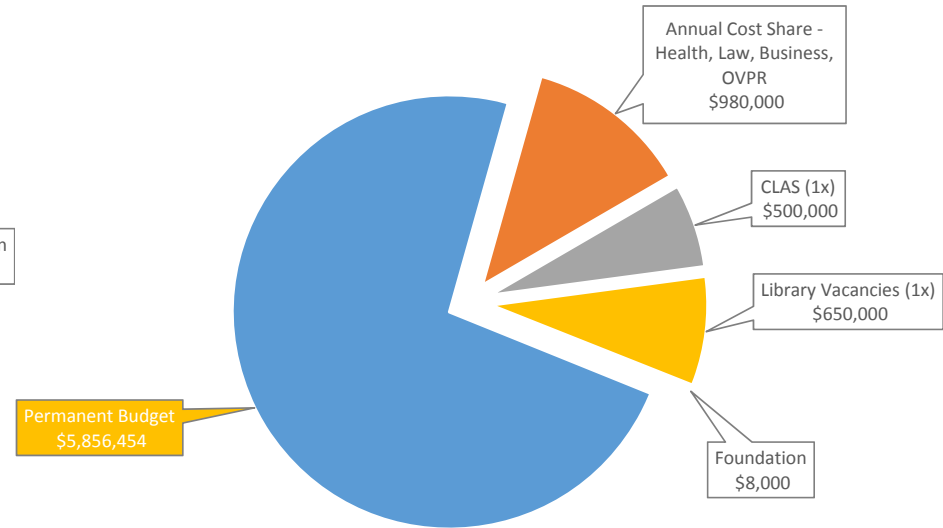
DRAFT

NOT FOR DISTRIBUTION

FY2016 UConn Library Collection Actual Spend - \$8,302,747



FY2017 UConn Library Collection Budget - \$7,994,454

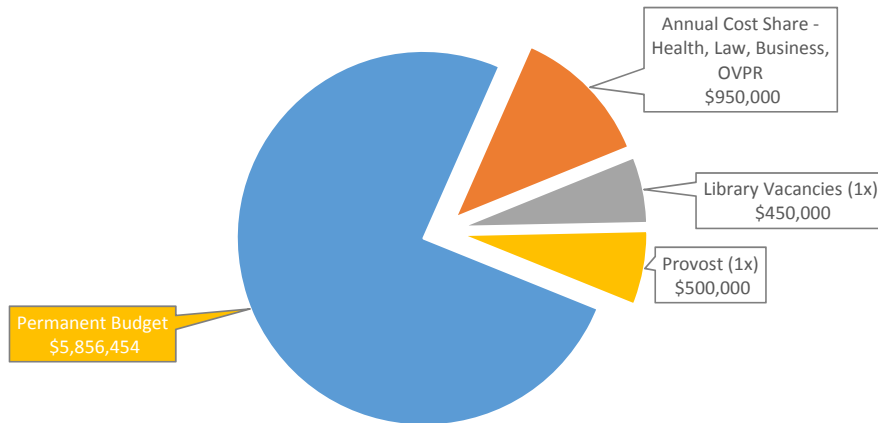


UConn Library Collections

DRAFT

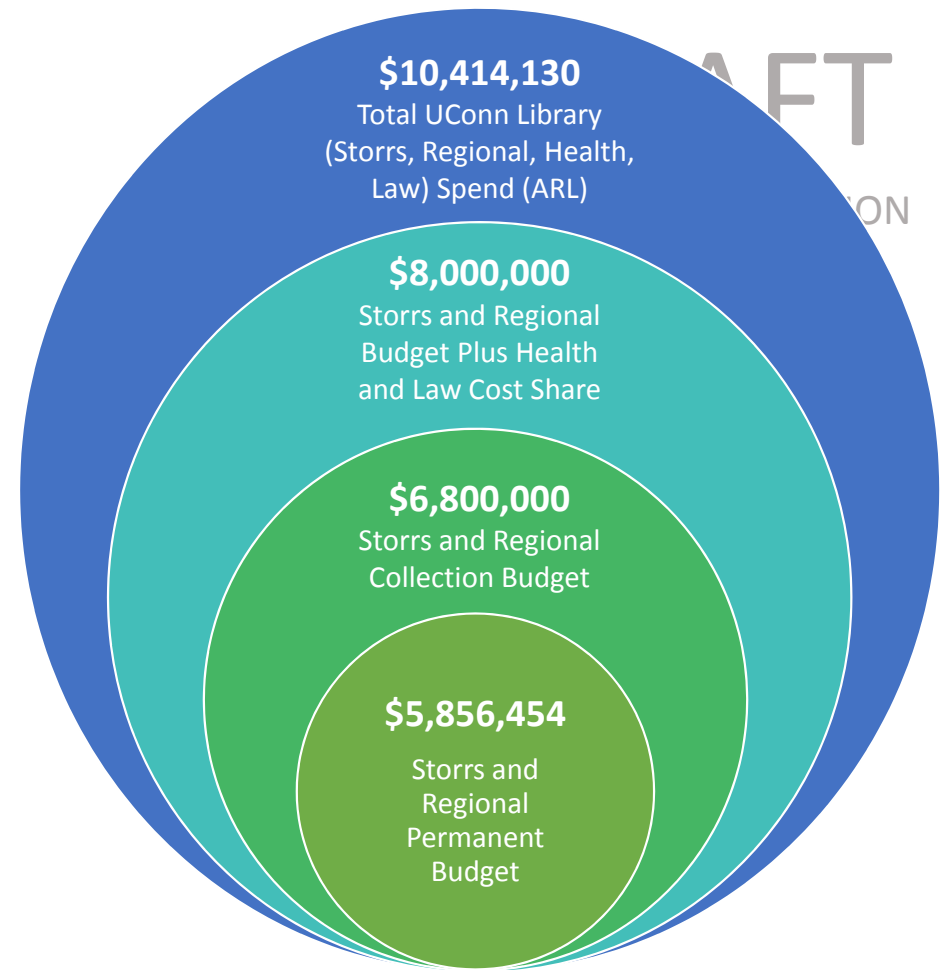
NOT FOR DISTRIBUTION

FY2018 UConn Library Collection Budget (Anticipated) - \$7,766,454



UConn Library Collections

- FY2016 Total Library Materials Budget for all campuses (ARL) - \$10,414,130
 - Ongoing resource purchases (e.g., subscriptions, annual license fees): \$9,190,984 (up 1% through careful inflation planning)
 - One-time resource purchases: \$366,663 (down 63% from last year)
 - Collection support: \$856,483 (down 36% through consolidation of collection management software)



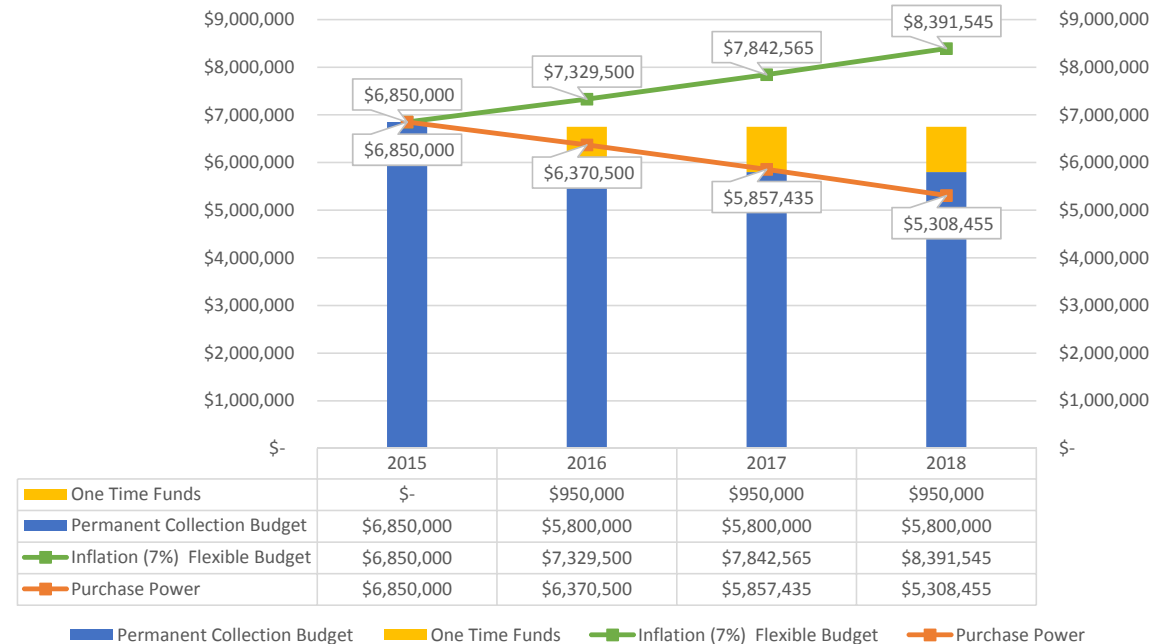
DRAFT

UConn Library FY2016 Collection Expenditures – Storrs & Regionals

Effect of Annual Inflation

- Ongoing electronic serials, books and databases account for the largest amount of collection expenditure (> \$5.5m)
- Ongoing resources annual inflation is 7%
- Every year the Library must cut resources to maintain a flat budget
- Purchasing power reduced each year

NOT FOR DISTRIBUTION
Cumulative Reduction in Purchasing Power Due to Annual Inflation

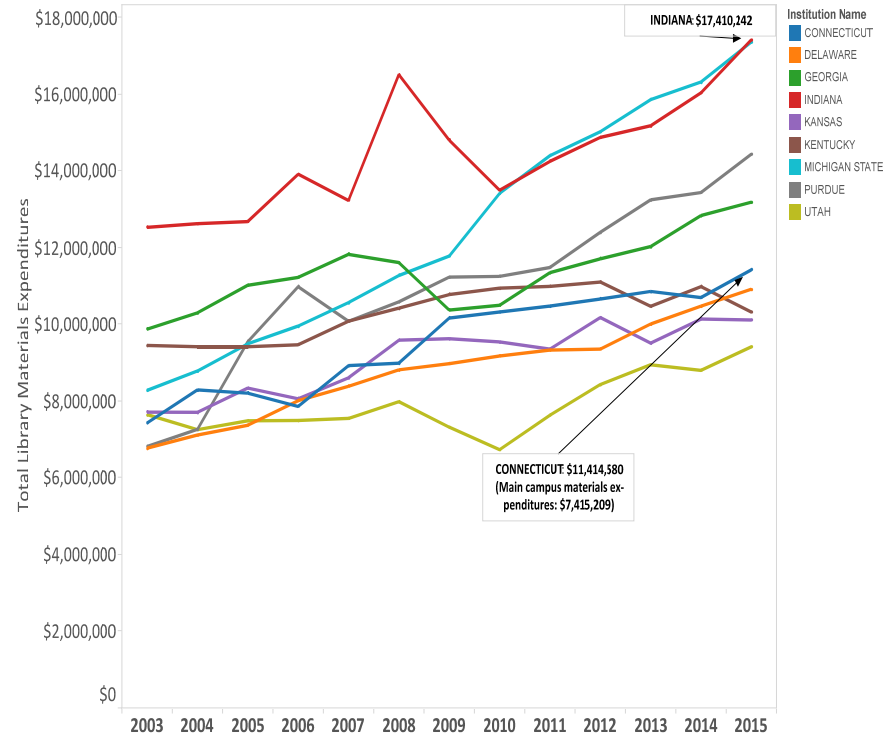


DRAFT

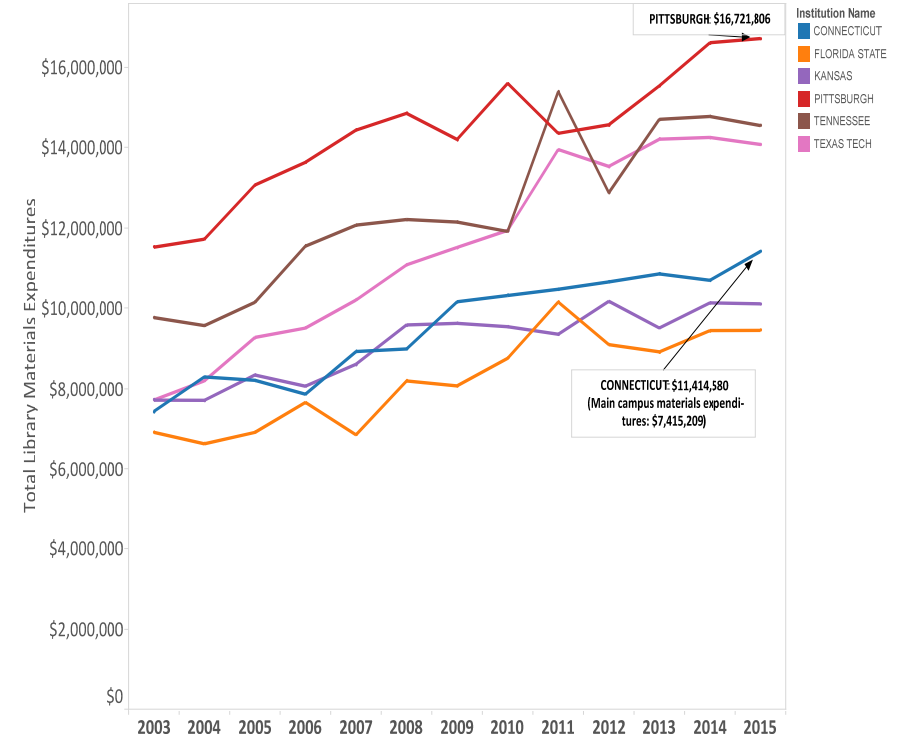
UConn Library FY2016 Collection Expenditures – OIRE Peer and ARL Comparison

NOT FOR DISTRIBUTION

Library materials expenditures, UConn OIRE peer institutions, 2003-2015



Library materials expenditures, UConn ARL peer institutions, 2003-2015



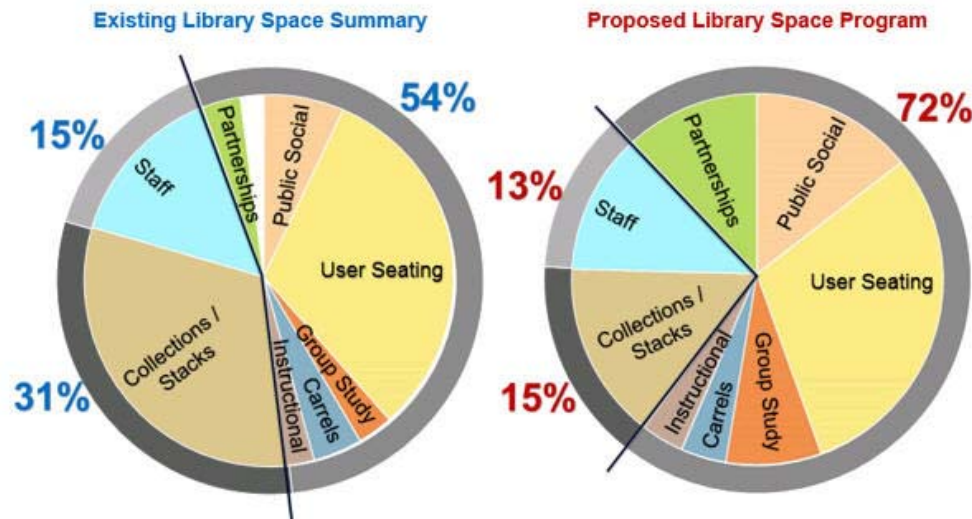
DRAFT

NOT FOR DISTRIBUTION

Babbidge Library Space

Babbidge Library is a top destination on campus.

The new Babbidge Library Master Plan will address the continuous increase in foot traffic and changing nature of academic library services by providing multiple learning, scholarly, collaborative and innovative spaces relevant to faculty, students, staff and community members.



DRAFT

NOT FOR DISTRIBUTION

Babbidge Library Space

Sample Usage Statistics

- Open Hours per semester – 27,972
- Gate count
 - 2015-2016 Academic year: 1,770,326 (does not include Bookworms or other public space outside of security gates)
 - Up 6% from last academic year
 - Fall 2016: Regularly reaching 10,000/day
- Group study reservations (32 rooms)
 - Fall 2015: 12,010
 - Spring 2016: 14,447
 - Fall 2016 (as of 11/16/16): 10,242
- Printing
 - 2015 – 1,087,000 copies
 - 2016 – 1,055,00 copies (to date)
- Laptops & iPads
 - 5,690 checkouts from January-July, 2016



UConn Library by the Numbers

Question	Data	Data Source
Index rank by the American Research Libraries (2015)	58	ARL
Titles held June 30	2,519,828	ARL Question 1
Volumes held	3,717,015	ARL Question 2
Total electronic books	879,693	ARL Question 4
Total library expenditures (fringe benefits excluded)	\$22,678,931	ARL Question 6
Total library materials expenditures	\$10,414,130	ARL Question 7
One-time resource purchases	\$ 366,663	ARL Question 7a
Ongoing resource purchases (e.g., subscriptions, annual license fees)	\$ 9,190,984	ARL Question 7b
Collection support	\$ 856,483	ARL Question 7c
Total salaries and wages	\$11,057,163	ARL Question 8
Professional staff	\$ 6,037,074	ARL Question 8a
Support staff	\$ 4,261,714	ARL Question 8b
Student assistants	\$ 758,375	ARL Question 8c
Other operating expenditures	\$ 1,207,638	ARL Question 9
Fringe benefits	\$ 6,051,601	ARL Question 10
Total staff (includes student FTE)	157	ARL Question 13
Professional staff, FTE	68	ARL Question 13a
Support staff, FTE	48	ARL Question 13b
Student assistants, FTE	41	ARL Question 13c
Number of library presentations to groups	817	ARL Question 14
Number of totla participants in group presentations	12,547	ARL Question 15
Number of reference transactions	11,957	ARL Question 16
Number of initial circulations (excluding reserves)	94,680	ARL Question 17
Number of successful full-text article requests (journals)	6,292,275	ARL Question 18
Number of regular searches (databases)	6,265,493	ARL Question 19
Number of federated searches (databases)	1,032,876	ARL Question 20
Total number of filled requests tovided to other libraries	32,995	ARL Question 21
Total number of filled requests received from other libraries or providers	43,824	ARL Question 22
Annual gate count	1,770,326	ARL Question 23
Number of Doctor's Degrees awarded	756	ARL Question 24
Number of full-time instructional faculty	2,017	ARL Question 26
Total undergrads and grads at all campuses	31,624	2016 Fact Sheet
Area in square feet of external storage	-	Internal
Babbidge: total hours library is open per semester	27,972	Internal
Number of facilities served (regional campuses, Fine Arts, etc.)	10	Internal
Babbidge: area in square feet NOT under library control	28,303	Master Plan
Babbidge: area in square feet under library control (to track changes in use)	268,593	Master Plan
Babbidge: assignable square feet	268,593	Master Plan
Babbidge: net square footage	388,360	Master Plan
Babbidge: number of user seats (additional 747 seats are located in Bookworms Café, instructional spaces, and individual carrels)	2,689	Master Plan
Babbidge: laptop loans (January-July, 2016)	5,690	Internal
Babbidge: individual printing calendar year 2015	1,087,000	Internal
Babbidge: seats per 100 students	13	Master Plan
Babbidge: total gross square footage	422,860	Master Plan
Stacks square footage	61,700	Master Plan
Volumes per student (FT)	75	Master Plan

DRAFT

NOT FOR DISTRIBUTION

Questions & Next Steps